

# Advent 2014 - day 8

as announced on *day 1* the pattern allows you to lengthen your shawl to your liking; between *day 8 & 9* is the first place to insert the lengthening pattern, therefore this files contains

- an instruction to find out if you want to lengthen your shawl  
and how to do so if necessary ..... page 2
- the instruction for the lengthening pattern (*insert*) ..... page 3
- the instruction for today's pattern ..... page 4
- the terms of use ..... page 5

## calculator

you must not calculate the number of lengthening patterns (*inserts*) for yourself, from today on you find a calculator in my blog below the *daily instructions*:  
[http://www.unikatissima.de/e/?page\\_id=8992#lpc](http://www.unikatissima.de/e/?page_id=8992#lpc)



# Advent 2014 - day 8

find the calculator in my blog [http://www.unikatissima.de/e/?page\\_id=8992#lpc](http://www.unikatissima.de/e/?page_id=8992#lpc)

## how it works

it may look complicated, but it is not :)

1. knit until you have finished with row 120 (today's pattern - day 8)
2. pin out your knitting and measure the length of the knitting until row 120 (= L)  
→ the estimated length of your shawl will be approximately 3.2 times as long (3.2 x L)
- 3a. if you are happy with the estimated length of your shawl simply wait until tomorrow and continue knitting the daily patterns
- 3b. if the estimated length (= EL) of your shawl is too short for your liking, you will have to decide on the desired length (= DL) and knit a number of lengthening patterns (= inserts) to be placed between days 8 and 9 and between days 16 and 17 for symmetry

### 3 steps to calculate the number of inserts to get your desired length:

**L** : measured length of rows 1 - 120

**DL** : desired length

**EL** : estimated length without inserts  
= ca.  $3.225 \times L$

**IL** : length of 2 inserts, one to be knitted on each side of the center pattern (see diagram below) = ca.  $0.1935 \times L$

**NI** : number of inserts to be knitted between days 8 & 9 and to be repeated =  $(DL - EL) / IL$  between days 16 & 17

i.e. subtract the estimated length from your desired length and divide by the length of 2 inserts

*example: (all values are approximate!)*

$L = 36 \text{ cm} / 14 \text{ inches}$

$DL = 140 \text{ cm} / 55 \text{ inches}$

$EL = 3.225 \times L = 116 \text{ cm} / 45 \text{ inches}$

$IL = 0.1935 \times L = 7 \text{ cm} / 2.7 \text{ inches}$

$NI = (DL - EL) / IL =$   
 $(140 - 116) / 7 = \text{ca. } 3.4 \text{ inserts}$   
 $(55 - 45) / 2.7 = \text{ca. } 3.7 \text{ inserts}$

i.e. decide if you knit 3 or 4 inserts each between days 8 & 9 and days 16 & 17

new estimated length with 3 inserts each:

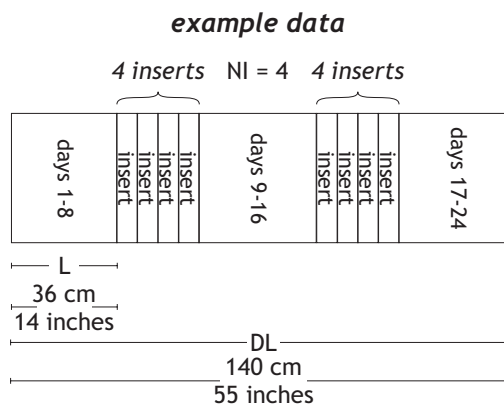
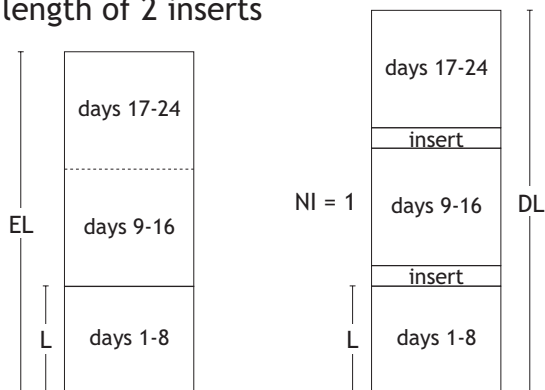
$EL + (NI \times IL) = 116 + (3 \times 7) = 137 \text{ cm}$

$EL + (NI \times IL) = 45 + (3 \times 2.7) = 53 \text{ inches}$

new estimated length with 4 inserts each:

$EL + (NI \times IL) = 116 + (4 \times 7) = 144 \text{ cm}$

$EL + (NI \times IL) = 45 + (4 \times 2.7) = 56 \text{ inches}$

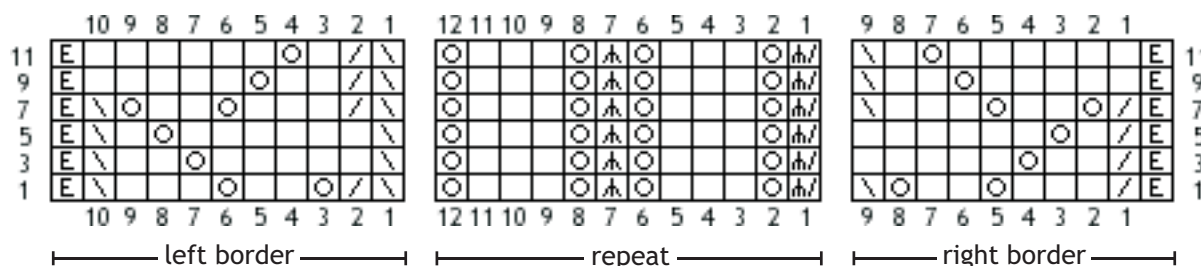


# Advent 2014 - insert

find the pattern of day 8 on page 4

the pattern shows only the right side rows  
find the *symbols & abbreviations* and  
how to *knit stitches in the wrong side rows* in the file of *day 1, page 2*

row numbers are row numbers of insert only



row numbers are row numbers of insert only

- row 1: edge st, k2tog, 3x k, yo, 2x k, yo, skpo,  
\* (k2tog OR s2kpo), yo, 3x k, yo, s2kpo, yo, 3x k, yo, \*  
skpo, k2tog, yo, 2x k, yo, 3x k, skpo, edge st
- row 3: edge st, k2tog, 2x k, yo, 5x k,  
\* (k2tog OR s2kpo), yo, 3x k, yo, s2kpo, yo, 3x k, yo, \*  
skpo, 5x k, yo, 2x k, skpo, edge st
- row 5: edge st, k2tog, k, yo, 6x k,  
\* (k2tog OR s2kpo), yo, 3x k, yo, s2kpo, yo, 3x k, yo, \*  
skpo, 6x k, yo, k, skpo, edge st
- row 7: edge st, k2tog, yo, 2x k, yo, 3x k, skpo,  
\* (k2tog OR s2kpo), yo, 3x k, yo, s2kpo, yo, 3x k, yo, \*  
skpo, k2tog, 3x k, yo, 2x k, yo, skpo, edge st
- row 9: edge st, 5x k, yo, 2x k, skpo,  
\* (k2tog OR s2kpo), yo, 3x k, yo, s2kpo, yo, 3x k, yo, \*  
skpo, k2tog, 2x k, yo, 5x k, edge st
- row 11: edge st, 6x k, yo, k, skpo,  
\* (k2tog OR s2kpo), yo, 3x k, yo, s2kpo, yo, 3x k, yo, \*  
skpo, k2tog, k, yo, 6x k, edge st

lace snowdrop

Advent 2014 - day 8

the pattern shows only the right side rows

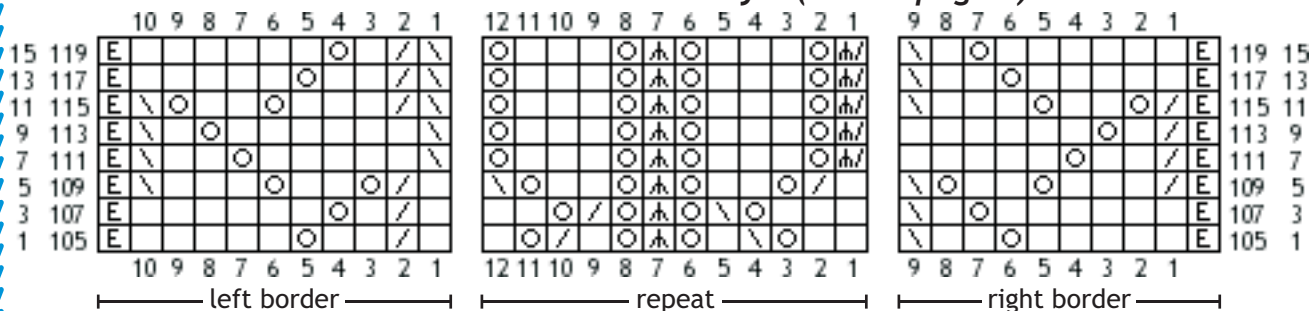
find the *symbols & abbreviations* and

how to *knit stitches in the wrong side rows* in the file of *day 1, page 2*

inner row numbers are total numbers of rows for shawl without lengthening patterns

outer row numbers are row numbers of this day's pattern

if wanted knit inserts after *day 8* (s. also page 2)



normal row numbers are total numbers of rows for shawl without lengthening patterns

italic row numbers are row numbers of this day's pattern

- row 105: edge st, 5x k, yo, 2x k, skpo,
- row 1* \* 2x k, yo, skpo, k, yo, s2kpo, yo, k, k2tog, yo, k, \*  
k, k2tog, 2x k, yo, 5x k, edge st
- row 107: edge st, 6x k, yo, k, skpo,
- row 3* \* 3x k, yo, skpo, yo, s2kpo, yo, k2tog, yo, 2x k, \*  
k, k2tog, k, yo, 6x k, edge st
- row 109: edge st, k2tog, 3x k, yo, 2x k, yo, skpo,
- row 5* \* k, k2tog, yo, 2x k, yo, s2kpo, yo, 2x k, yo, skpo, \*  
k, k2tog, yo, 2x k, yo, 3x k, skpo, edge st
- row 111: edge st, k2tog, 2x k, yo, 5x k,
- row 7* \* (k2tog OR s2kpo), yo, 3x k, yo, s2kpo, yo, 3x k, yo, \*  
skpo, 5x k, yo, 2x k, skpo, edge st
- row 113: edge st, k2tog, k, yo, 6x k,
- row 9* \* (k2tog OR s2kpo), yo, 3x k, yo, s2kpo, yo, 3x k, yo, \*  
skpo, 6x k, yo, k, skpo, edge st
- row 115: edge st, k2tog, yo, 2x k, yo, 3x k, skpo,
- row 11* \* (k2tog OR s2kpo), yo, 3x k, yo, s2kpo, yo, 3x k, yo, \*  
skpo, k2tog, 3x k, yo, 2x k, yo, skpo, edge st
- row 117: edge st, 5x k, yo, 2x k, skpo,
- row 13* \* (k2tog OR s2kpo), yo, 3x k, yo, s2kpo, yo, 3x k, yo, \*  
skpo, k2tog, 2x k, yo, 5x k, edge st
- row 119: edge st, 6x k, yo, k, skpo,
- row 15* \* (k2tog OR s2kpo), yo, 3x k, yo, s2kpo, yo, 3x k, yo, \*  
skpo, k2tog, k, yo, 6x k, edge st

if wanted knit inserts after *day 8* (s. also page 2)

these are the terms of use for the

## lace knitter's Advent calendar 2014 - day 8

the terms of use are valid as well for this file as for the other pattern files which will be published from Dec 1, 2014 to Dec 24, 2014

in English at [http://www.unikatissima.de/e/?page\\_id=8992](http://www.unikatissima.de/e/?page_id=8992) and  
in German at [http://www.unikatissima.de/d/?page\\_id=11720](http://www.unikatissima.de/d/?page_id=11720)

### terms of use

---

**all content** (text, pictures, etc) of this document is **protected by copyright**.  
this document/file is **for your personal use only**.

you may

- create items from this instruction,
- adapt/vary the pattern and
- sell the finished items,
- print a copy of this file **for your personal use only** and
- set a link to my ravelry pages ([www.ravelry.com/designers/susann-hajjar](http://www.ravelry.com/designers/susann-hajjar)) to tell friends of this document;
  
- **not** share this file:
  - no (re)sale of file or printed copies of this document,
  - no distribution for free or loan, nor digitally nor on paper,
  - no publication in internet (e.g. forums, blogs, etc) or any other medium;
- **not** mass produce items from my instructions/patterns;
- **not** claim the instruction/pattern as your own.

it would be great if you gave credit to unikatissima  
- I really would appreciate this! Thank you.

if you have any questions about the terms of use please drop me an email:  
[unikatissima@gmx.de](mailto:unikatissima@gmx.de)

---

I'd love to see your shawl! :)  
you can share it with us all in the ravelry group *unikatissima* at  
<http://www.ravelry.com/groups/unikatissima>