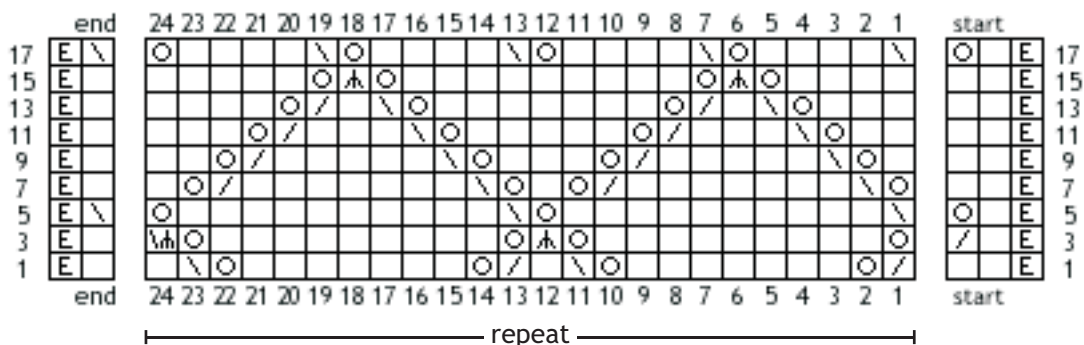


Advent 2016 - day 12

the pattern shows only the right side rows

find the *symbols & abbreviations* and
how to knit stitches in the *wrong side rows* in the file of *day 1, page 2*



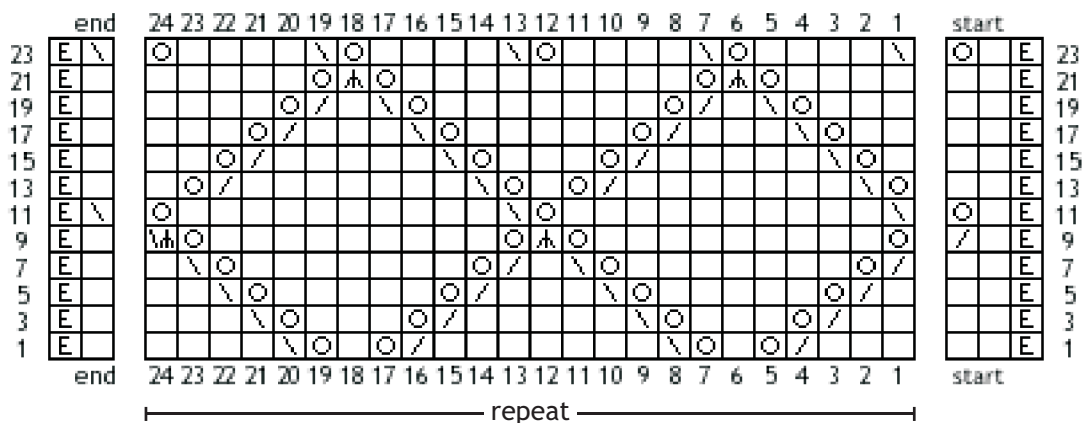
- row 1: edge st, 2x k,
* 2x (k2tog, yo, 7x k, yo, skpo, k), *
k, edge st
- row 3: edge st, k, k2tog,
* yo, 9x k, yo, s2kpo,
yo, 9x k, yo, (s2kpo OR skpo), *
k, edge st
- row 5: edge st, k, yo,
* 2x (skpo, 10x k, yo), *
skpo, edge st
- row 7: edge st, 2x k,
* 2x (yo, skpo, 7x k, k2tog, yo, k), *
k, edge st
- row 9: edge st, 2x k,
* 2x (k, yo, skpo, 5x k, k2tog, yo, 2x k), *
k, edge st
- row 11: edge st, 2x k,
* 2x (2x k, yo, skpo, 3x k, k2tog, yo, 3x k), *
k, edge st
- row 13: edge st, 2x k,
* 2x (3x k, yo, skpo, k, k2tog, yo, 4x k), *
k, edge st
- row 15: edge st, 2x k,
* 2x (4x k, yo, s2kpo, yo, 5x k), *
k, edge st
- row 17: edge st, k, yo,
* 2x (skpo, 4x k, yo, skpo, 4x k, yo), *
skpo, edge st

After having knitted the pattern of day 12 you have knitted half of the length.
Pin out your shawl and measure the length, then multiply the length by 2 to see if you like the total length.
The lengthening pattern on the next page is as long as the rows from your yarn marker from day 11 to your needle.
So if you feel that your shawl will be too short add as many repeats of the lengthening pattern as you need to reach the shawl length that you want.
Enjoy! :)

Advent 2016 - lengthening pattern

the pattern shows only the right side rows

find the *symbols & abbreviations* and
how to knit stitches in the *wrong side rows* in the file of *day 1, page 2*



before knitting the lengthening pattern read the instructions in the box on the previous page

before knitting the lengthening pattern read the instructions in the box on the previous page

- | | |
|---|---|
| <p>row 1: edge st, 2x k,
* 2x (3x k, k2tog, yo, k, yo, skpo, 4x k), *
k, edge st</p> <p>row 3: edge st, 2x k,
* 2x (2x k, k2tog, yo, 3x k, yo, skpo, 3x k), *
k, edge st</p> <p>row 5: edge st, 2x k,
* 2x (k, k2tog, yo, 5x k, yo, skpo, 2x k), *
k, edge st</p> <p>row 7: edge st, 2x k,
* 2x (k2tog, yo, 7x k, yo, skpo, k), *
k, edge st</p> <p>row 9: edge st, k, k2tog,
* yo, 9x k, yo, s2kpo,
yo, 9x k, yo, (s2kpo OR skpo), *
k, edge st</p> <p>row 11: edge st, k, yo,
* 2x (skpo, 10x k, yo), *
skpo, edge st</p> | <p>row 13: edge st, 2x k,
* 2x (yo, skpo, 7x k, k2tog, yo, k), *
k, edge st</p> <p>row 15: edge st, 2x k,
* 2x (k, yo, skpo, 5x k, k2tog, yo, 2x k), *
k, edge st</p> <p>row 17: edge st, 2x k,
* 2x (2x k, yo, skpo, 3x k, k2tog, yo, 3x k), *
k, edge st</p> <p>row 19: edge st, 2x k,
* 2x (3x k, yo, skpo, k, k2tog, yo, 4x k), *
k, edge st</p> <p>row 21: edge st, 2x k,
* 2x (4x k, yo, s2kpo, yo, 5x k), *
k, edge st</p> <p>row 23: edge st, k, yo,
* 2x (skpo, 4x k, yo, skpo, 4x k, yo), *
skpo, edge st</p> |
|---|---|

These are the terms of use for

unikatissima's Lace Knitter's Advent Calendar 2016 - Day 12

The terms of use are valid as well for this file as for the other pattern files which will be published from Dec 1, 2016 to Dec 24, 2016

in English at http://www.unikatissima.de/e/?page_id=10985 and
in German at http://www.unikatissima.de/d/?page_id=14105

Terms of use

All content (text, pictures, etc) of this document is **protected by copyright**.

This document/file is **for your personal use only**.

You may

- create items from this instruction,
- adapt/vary the pattern and
- sell the finished items,
- print a copy of this file **for your personal use only** and
- set a link to my ravelry pages (www.ravelry.com/designers/susann-hajjar) or my blog (www.unikatissima.de/e/?page_id=10985) to tell friends of this document;
- **not** share this file:
 - no (re)sale of file or printed copies of this document,
 - no distribution for free or loan, nor digitally nor on paper,
 - no publication in internet (e.g. forums, blogs, etc) or any other medium;
- **not** mass produce items from my instructions/patterns;
- **not** claim the instruction/pattern as your own.

It would be great if you gave credit to unikatissima
- I really would appreciate this! Thank you

If you have any questions about the terms of use please drop me an email:
unikatissima@gmx.de

Share your shawl

I opened the group *unikatissima* at ravelry where you can discuss this pattern and my other patterns, too.

You can register at ravelry with your username and a valid email address only, with all other information about you it's up to you whether you give them (at least it was like this when I registered ;-)).

Links:

www.ravelry.com
www.ravelry.com/groups/unikatissima