

unikatissima's Lace

Pattern Winterberry

These are the instructions for
unikatissima's Lace Knitter's Advent Calendar 2017

Enjoy!



This year I offer you an Advent calendar shawl that is symmetrically patterned in length and shows different lace diamonds, harmoniously distributed over the whole shawl.

The stockinette parts make as well the pattern as the knitting experience calm and relaxed - just the right thing in this busy time :)

The pattern has a repeat of 14 stitches which allows you to decide on the width of your shawl to your liking.

The pattern of day 12 can be repeated as often as you like to make the shawl as long as you wish.

I wish you a relaxed and relaxing Advent knit! 😊

You can find this file and more information
in English at http://www.unikatissima.de/e/?page_id=12167 and
in German at http://www.unikatissima.de/d/?page_id=15556

I'd love to see your shawl! :)

You can share it with us all in the ravelry group *unikatissima* at
<http://www.ravelry.com/groups/unikatissima>

Symbols & Abbreviations

st(s) - stitch(es)

RS - right side, odd numbered row

WS - wrong side, even numbered row

k - knit

yo - yarn over

k2tog - knit 2 together
or other right slanted decrease

skpo - slip 1, knit 1, pass slipped stitch over
or other left slanted decrease

sssk - slip 3 knitwise, knit
together from front or other
left slanted double decrease

(sssk OR k2tog) -
first repeat *: k2tog
all following repeats *: sssk
* *first repeat* means at beginning of row
* *all following repeats* means in the row

edge st - edge/selvedge stitch
- knit as many edge sts as you like e.g. *4 garter sts on both sides*
- use your favourite edge stitch like e.g. *slip the edge stitch purlwise*

in charts: more than 6 k sts are marked

* ... * - *in written instructions*: text between asterisks is the repeat

EVEN ROWS (WS)

All instructions show only the RS rows, purl all stitches in the WS rows.

DOUBLE ROW NUMBERS

The normal row number is the row number of the pattern of the day,
the *italic row number* is the total row number (added from day 2 on).

Note: After day 12 the total row number is only correct if you haven't repeated day 12.

GARTER STITCH BORDER

If you decide to knit a couple of garter stitches (= *k every row*) at beginning and end of a row, you may also want to add a couple of garter stitch rows at the beginning and end of your shawl.

CAST-ON

Cast-on number of wanted repeats $\times 14 + 3 + 2 \times$ number of wanted edge sts sts.

Example: You want to have 5 repeats and 4 garter sts at each side, then cast-on
 $5 \times 14 + 3 + 2 \times 4 = 81$ sts.

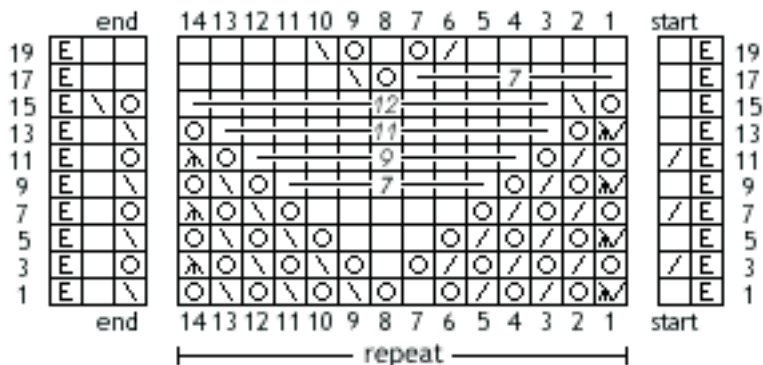
BIND-OFF

I suggest to use a loose bind-off for your shawl, e.g. Jeny's surprisingly stretchy bind off (www.knitty.com/ISSUEfall09/FEATjssbo.php).

Advent 2017 - day 1

the pattern shows only the right side rows

Cast-on the desired number of stitches (for cast-on see page 2)



- row 1: edge st, k,
* (sssk OR k2tog), yo, k2tog, yo, k2tog, yo, k, yo, skpo, yo, skpo, yo, skpo, yo, *
skpo, k, edge st
- row 3: edge st, k2tog,
* yo, k2tog, yo, k2tog, yo, k2tog, yo, k, yo, skpo, yo, skpo, yo, sssk, *
yo, k, edge st
- row 5: edge st, k,
* (sssk OR k2tog), yo, k2tog, yo, k2tog, yo, 3x k, yo, skpo, yo, skpo, yo, *
skpo, k, edge st
- row 7: edge st, k2tog,
* yo, k2tog, yo, k2tog, yo, 5x k, yo, skpo, yo, sssk, *
yo, k, edge st
- row 9: edge st, k,
* (sssk OR k2tog), yo, k2tog, yo, 7x k, yo, skpo, yo, *
skpo, k, edge st
- row 11: edge st, k2tog,
* yo, k2tog, yo, 9x k, yo, sssk, *
yo, k, edge st
- row 13: edge st, k,
* (sssk OR k2tog), yo, 11x k, yo, *
skpo, k, edge st
- row 15: edge st, k,
* yo, skpo, 12x k, *
yo, skpo, edge st
- row 17: edge st, k,
* 7x k, yo, skpo, 5x k, *
2x k, edge st
- row 19: edge st, k,
* 5x k, k2tog, yo, k, yo, skpo, 4x k, *
2x k, edge st

unikatissima's Lace

Pattern Winterberry

These are the terms of use for

unikatissima's Lace Knitter's Advent Calendar 2017

The terms of use are valid as well for this file as for the other pattern files which will be published from Dec 1, 2017 to Dec 24, 2017

in English at http://www.unikatissima.de/e/?page_id=12167 and
in German at http://www.unikatissima.de/d/?page_id=15556 .

Terms of use

All content (text, pictures, etc) of this document is **protected by copyright**.

This document/file is **for your personal use only**.

You may

- create items from this instruction,
- adapt/vary the pattern and
- sell the finished items,
- print a copy of this file **for your personal use only** and
- set a link to my ravelry pages (www.ravelry.com/designers/susann-hajjar) or my blog (www.unikatissima.de/e/) to tell friends of this document;
- **not** change this file without my prior permission;
- **not** share this file:
 - no (re)sale of file or printed copies of this document,
 - no distribution for free or loan, neither digitally nor on paper,
 - no publication in internet (e.g. forums, blogs, etc) or any other medium;
- **not** mass produce items from my instructions/patterns;
- **not** claim the instruction/pattern as your own.

It would be great if you gave credit to unikatissima
- I really would appreciate this! Thank you

If you have any questions about the terms of use please drop me an email:

Share your shawl

I opened the group *unikatissima* at ravelry where you can discuss this pattern and my other patterns, too.

You can register at ravelry with your username and a valid email address only, with all other information about you it's up to you whether you give them (at least it was like this when I registered ;-)).

Links:

www.ravelry.com
www.ravelry.com/groups/unikatissima