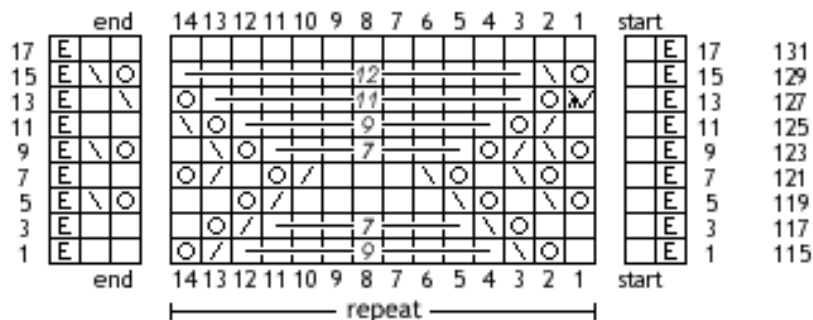


Pattern Winterberry

Advent 2017 - day 7

the pattern shows only the right side rows

for the symbols & abbreviations and more information see the file of day 1



- row 1: edge st, k,
- row 115: * k, yo, skpo, 9x k, k2tog, yo, *
2x k, edge st
- row 3: edge st, k,
- row 117: * 2x k, yo, skpo, 7x k, k2tog, yo, k, *
2x k, edge st
- row 5: edge st, k,
- row 119: * yo, skpo, k, yo, skpo, 5x k, k2tog, yo, 2x k, *
yo, skpo, edge st
- row 7: edge st, k,
- row 121: * k, yo, skpo, k, yo, skpo, 3x k, k2tog, yo, k, k2tog, yo, *
2x k, edge st
- row 9: edge st, k,
- row 123: * yo, skpo, k2tog, yo, 7x k, yo, skpo, k, *
yo, skpo, edge st
- row 11: edge st, k,
- row 125: * k, k2tog, yo, 9x k, yo, skpo, *
2x k, edge st
- row 13: edge st, k,
- row 127: * (sssk OR k2tog), yo, 11x k, yo, *
skpo, k, edge st
- row 15: edge st, k,
- row 129: * yo, skpo, 12x k, *
yo, skpo, edge st
- row 17: edge st, k,
- row 131: * 14x k, *
2x k, edge st

All content (text, pictures, etc.) of this document is protected by copyright.

Please note: by using this instruction you agree to my terms of use which can be found in the file of day 1, page 4.