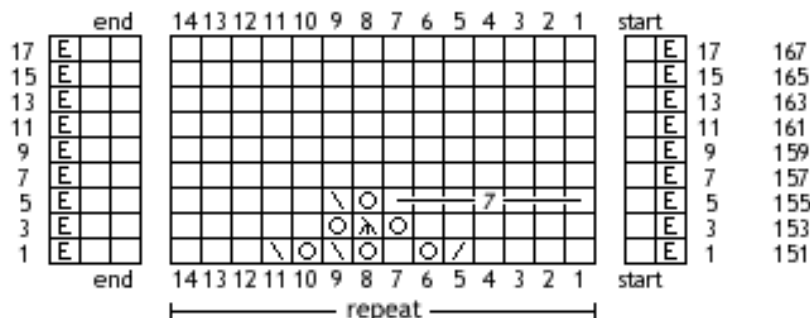


Pattern Winterberry

# Advent 2017 - day 9

the pattern shows only the right side rows

for the symbols & abbreviations and more information see the file of day 1



- row 1: edge st, k,
- row 151: \* 4x k, k2tog, yo, k, yo, skpo, yo, skpo, 3x k, \*  
2x k, edge st
- row 3: edge st, k,
- row 153: \* 6x k, yo, sssk, yo, 5x k, \*  
2x k, edge st
- row 5: edge st, k,
- row 155: \* 7x k, yo, skpo, 5x k, \*  
2x k, edge st
- row 7: edge st, k,
- row 157: \* 14x k, \*  
2x k, edge st
- row 9: edge st, k,
- row 159: \* 14x k, \*  
2x k, edge st
- row 11: edge st, k,
- row 161: \* 14x k, \*  
2x k, edge st
- row 13: edge st, k,
- row 163: \* 14x k, \*  
2x k, edge st
- row 15: edge st, k,
- row 165: \* 14x k, \*  
2x k, edge st
- row 17: edge st, k,
- row 167: \* 14x k, \*  
2x k, edge st

All content (text, pictures, etc.) of this document is protected by copyright.

Please note: by using this instruction you agree to my terms of use which can be found in the file of day 1, page 4.