

## Advent 2017 - day 12

### Lengthening of the shawl

---

After having knitted row 13 (row 217) today, you will have knitted half of the length of your shawl.

Pin out your shawl after row 13 (row 217) and measure the length, then multiply the length by 2 to see if you like the total length.

If you feel that your shawl will be too short, finish the pattern of day 12 and add as many *full* repeats of the pattern of day 12 (i.e. all 28 rows) as you need to reach the length you want.

**Note:** If you repeat the pattern of day 12 the given total number of rows is of course not correct anymore.

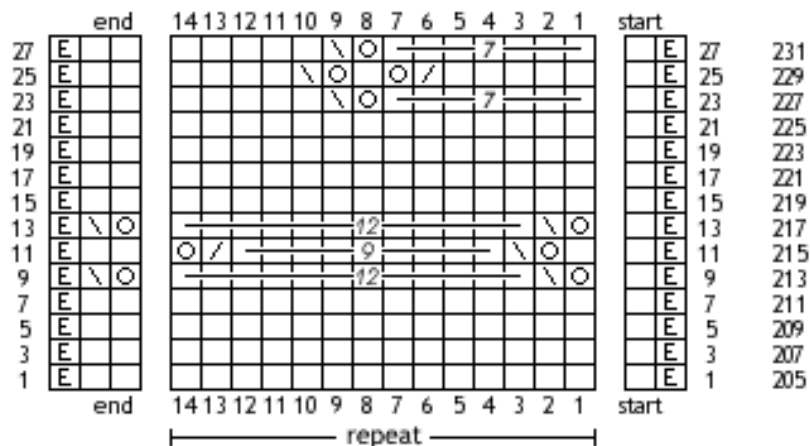
Enjoy the rest also! 😊

Pattern Winterberry

# Advent 2017 - day 12

the pattern shows only the right side rows

for the symbols & abbreviations and more information see the file of day 1



- |  |  |
|--|--|
| row 1: edge st, k,                         | row 15: edge st, k,                              |
| row 205: * 14x k, *                        | row 219: * 14x k, *                              |
| 2x k, edge st                              | 2x k, edge st                                    |
| row 3: edge st, k,                         | row 17: edge st, k,                              |
| row 207: * 14x k, *                        | row 221: * 14x k, *                              |
| 2x k, edge st                              | 2x k, edge st                                    |
| row 5: edge st, k,                         | row 19: edge st, k,                              |
| row 209: * 14x k, *                        | row 223: * 14x k, *                              |
| 2x k, edge st                              | 2x k, edge st                                    |
| row 7: edge st, k,                         | row 21: edge st, k,                              |
| row 211: * 14x k, *                        | row 225: * 14x k, *                              |
| 2x k, edge st                              | 2x k, edge st                                    |
| row 9: edge st, k,                         | row 23: edge st, k,                              |
| row 213: * yo, skpo, 12x k, *              | row 227: * 7x k, yo, skpo, 5x k, *               |
| yo, skpo, edge st                          | 2x k, edge st                                    |
| row 11: edge st, k,                        | row 25: edge st, k,                              |
| row 215: * k, yo, skpo, 9x k, k2tog, yo, * | row 229: * 5x k, k2tog, yo, k, yo, skpo, 4x k, * |
| 2x k, edge st                              | 2x k, edge st                                    |
| row 13: edge st, k,                        | row 27: edge st, k,                              |
| row 217: * yo, skpo, 12x k, *              | row 231: * 7x k, yo, skpo, 5x k, *               |
| yo, skpo, edge st                          | 2x k, edge st                                    |

All content (text, pictures, etc.) of this document is protected by copyright.

Please note: by using this instruction you agree to my terms of use which can be found in the file of day 1, page 4.