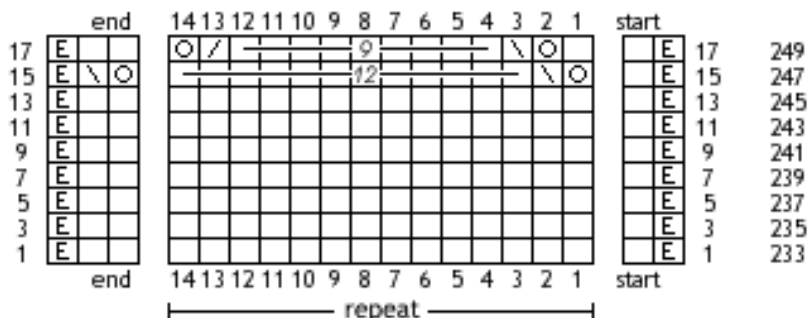


Pattern Winterberry

# Advent 2017 - day 13

the pattern shows only the right side rows

for the symbols & abbreviations and more information see the file of day 1



- row 1: edge st, k,
- row 233: \* 14x k, \*  
2x k, edge st
- row 3: edge st, k,
- row 235: \* 14x k, \*  
2x k, edge st
- row 5: edge st, k,
- row 237: \* 14x k, \*  
2x k, edge st
- row 7: edge st, k,
- row 239: \* 14x k, \*  
2x k, edge st
- row 9: edge st, k,
- row 241: \* 14x k, \*  
2x k, edge st
- row 11: edge st, k,
- row 243: \* 14x k, \*  
2x k, edge st
- row 13: edge st, k,
- row 245: \* 14x k, \*  
2x k, edge st
- row 15: edge st, k,
- row 247: \* yo, skpo, 12x k, \*  
yo, skpo, edge st
- row 17: edge st, k,
- row 249: \* k, yo, skpo, 9x k, k2tog, yo, \*  
2x k, edge st

All content (text, pictures, etc.) of this document is protected by copyright.

Please note: by using this instruction you agree to my terms of use which can be found in the file of day 1, page 4.