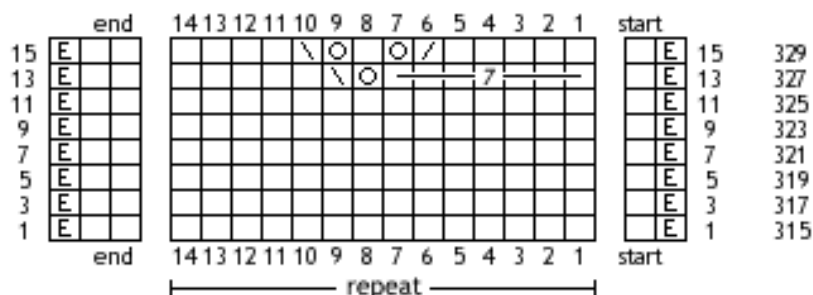


Pattern Winterberry

Advent 2017 - day 18

the pattern shows only the right side rows

for the symbols & abbreviations and more information see the file of day 1



- row 1: edge st, k,
- row 315: * 14x k, *
- 2x k, edge st
- row 3: edge st, k,
- row 317: * 14x k, *
- 2x k, edge st
- row 5: edge st, k,
- row 319: * 14x k, *
- 2x k, edge st
- row 7: edge st, k,
- row 321: * 14x k, *
- 2x k, edge st
- row 9: edge st, k,
- row 323: * 14x k, *
- 2x k, edge st
- row 11: edge st, k,
- row 325: * 14x k, *
- 2x k, edge st
- row 13: edge st, k,
- row 327: * 7x k, yo, skpo, 5x k, *
- 2x k, edge st
- row 15: edge st, k,
- row 329: * 5x k, k2tog, yo, k, yo, skpo, 4x k, *
- 2x k, edge st

All content (text, pictures, etc.) of this document is protected by copyright.
 Please note: by using this instruction you agree to my terms of use which can be found in the file of day 1, page 4.