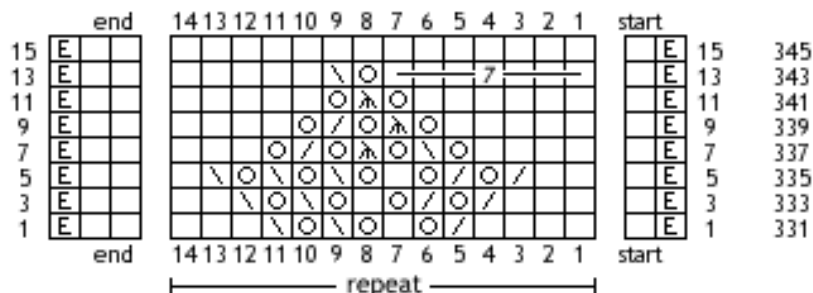


Pattern Winterberry

Advent 2017 - day 19

the pattern shows only the right side rows

for the symbols & abbreviations and more information see the file of day 1



- row 1: edge st, k,
- row 331: * 4x k, k2tog, yo, k, yo, skpo, yo, skpo, 3x k, *
2x k, edge st
- row 3: edge st, k,
- row 333: * 3x k, k2tog, yo, k2tog, yo, k, yo, skpo, yo, skpo, 2x k, *
2x k, edge st
- row 5: edge st, k,
- row 335: * 2x k, k2tog, yo, k2tog, yo, k, yo, skpo, yo, skpo, yo, skpo, k, *
2x k, edge st
- row 7: edge st, k,
- row 337: * 4x k, yo, skpo, yo, sssk, yo, k2tog, yo, 3x k, *
2x k, edge st
- row 9: edge st, k,
- row 339: * 5x k, yo, sssk, yo, k2tog, yo, 4x k, *
2x k, edge st
- row 11: edge st, k,
- row 341: * 6x k, yo, sssk, yo, 5x k, *
2x k, edge st
- row 13: edge st, k,
- row 343: * 7x k, yo, skpo, 5x k, *
2x k, edge st
- row 15: edge st, k,
- row 345: * 14x k, *
2x k, edge st

All content (text, pictures, etc.) of this document is protected by copyright.
Please note: by using this instruction you agree to my terms of use which can be found in the file of day 1, page 4.