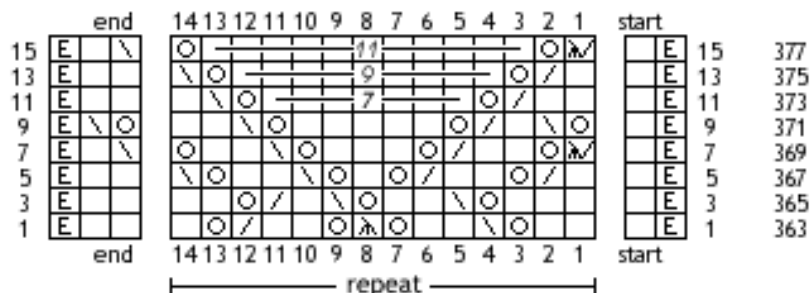


Pattern Winterberry

Advent 2017 - day 21

the pattern shows only the right side rows

for the symbols & abbreviations and more information see the file of day 1



- row 1: edge st, k,
- row 363: * 2x k, yo, skpo, 2x k, yo, sssk, yo, 2x k, k2tog, yo, k, *
2x k, edge st
- row 3: edge st, k,
- row 365: * 3x k, yo, skpo, 2x k, yo, skpo, k, k2tog, yo, 2x k, *
2x k, edge st
- row 5: edge st, k,
- row 367: * k, k2tog, yo, 2x k, k2tog, yo, k, yo, skpo, 2x k, yo, skpo, *
2x k, edge st
- row 7: edge st, k,
- row 369: * (sssk OR k2tog), yo, 2x k, k2tog, yo, 3x k, yo, skpo, 2x k, yo, *
skpo, k, edge st
- row 9: edge st, k,
- row 371: * yo, skpo, k, k2tog, yo, 5x k, yo, skpo, 2x k, *
yo, skpo, edge st
- row 11: edge st, k,
- row 373: * 2x k, k2tog, yo, 7x k, yo, skpo, k, *
2x k, edge st
- row 13: edge st, k,
- row 375: * k, k2tog, yo, 9x k, yo, skpo, *
2x k, edge st
- row 15: edge st, k,
- row 377: * (sssk OR k2tog), yo, 11x k, yo, *
skpo, k, edge st

All content (text, pictures, etc.) of this document is protected by copyright.

Please note: by using this instruction you agree to my terms of use which can be found in the file of day 1, page 4.