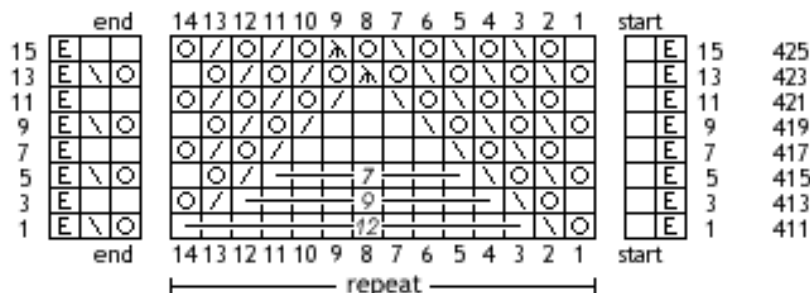


Pattern Winterberry

Advent 2017 - day 24

the pattern shows only the right side rows

for the symbols & abbreviations and more information see the file of day 1



- row 1: edge st, k,
- row 411: * yo, skpo, 12x k, *
yo, skpo, edge st
- row 3: edge st, k,
- row 413: * k, yo, skpo, 9x k, k2tog, yo, *
2x k, edge st
- row 5: edge st, k,
- row 415: * yo, skpo, yo, skpo, 7x k, k2tog, yo, k, *
yo, skpo, edge st
- row 7: edge st, k,
- row 417: * k, yo, skpo, yo, skpo, 5x k, k2tog, yo, k2tog, yo, *
2x k, edge st
- row 9: edge st, k,
- row 419: * yo, skpo, yo, skpo, yo, skpo, 3x k, k2tog, yo, k2tog, yo, k, *
yo, skpo, edge st
- row 11: edge st, k,
- row 421: * k, yo, skpo, yo, skpo, yo, skpo, k, k2tog, yo, k2tog, yo, k2tog, yo, *
2x k, edge st
- row 13: edge st, k,
- row 423: * yo, skpo, yo, skpo, yo, skpo, yo, sssk, yo, k2tog, yo, k2tog, yo, k, *
yo, skpo, edge st
- row 15: edge st, k,
- row 425: * k, yo, skpo, yo, skpo, yo, skpo, yo, sssk, yo, k2tog, yo, k2tog, yo, *
2x k, edge st

Bind-off with a loose bind-off, e.g. *Jeny's surprisingly stretchy bind off*.

You are finished now :)
I hope that you have enjoyed the knitting and
that you will love to wear your beautiful shawl :)