

These are the instructions for unikatissima's Lace Knitter's Advent Calendar 2018

Enjoy!



This year's Advent calendar shawl is very special because it shows seven different lace patterns which not only flow harmoniously into the next but which show a kind of symmetry without in fact being simply symmetrical 😊

Every pattern is repeated a couple of times and thus gives you a calm and relaxed knitting experience in this busy time :)

The pattern has a repeat of 20 stitches which allows you to decide on the width of your shawl to your liking.

The pattern of day 13 can be repeated as often as you like to make the shawl as long as you wish.

I wish you a relaxed and relaxing Advent knit!

You can find this file and more information
in English at http://www.unikatissima.de/e/?page_id=13195 and
in German at http://www.unikatissima.de/d/?page_id=16826

I'd love to see your shawl! :)

You can share it with us all in the ravelry group *unikatissima* at
<http://www.ravelry.com/groups/unikatissima>

Symbols & Abbreviations


st(s) - stitch(es)


RS - right side, odd numbered row


WS - wrong side, even numbered row


 k - knit


 yo - yarn over


 k2tog - knit 2 together
or other right slanted decrease


 skpo - slip 1, knit 1, pass slipped stitch over
or other left slanted decrease

 sl-k2tog-ssso - slip 1, knit 2
together, pass slipped stitch
over or other centered double
decrease


 (skpo OR sl-k2tog-ssso) -
first repeat *: skpo
all following repeats *: sl-k2tog-ssso

 sssk - slip 3 knitwise, knit
together from front or other
left slanted double decrease

 (k2tog OR k3tog) -
first repeat *: k2tog
all following repeats *: k3tog

 (k OR k2tog) -
first repeat *: k
all following repeats *: k2tog

* *first repeat* means at beginning of row, *all following repeats* means in the row

 edge st - edge/selvedge stitch
- knit as many edge sts as you like e.g. *4 garter sts on both sides*
- use your favourite edge stitch like e.g. *knit edge stitch on both sides*

* ... * - *in written instructions*: text between asterisks is the repeat

EVEN ROWS (WS)

All instructions show only the RS rows, purl all stitches in the WS rows.

DOUBLE ROW NUMBERS

The normal row number is the row number of the pattern of the day,
the *italic row number* is the total row number (included from day 2 on).

Note: After day 13 the total row number is only correct if you haven't repeated day 13.

GARTER STITCH BORDER

If you decide to knit a couple of garter stitches (= *k every row*) at beginning and end of a row, you may also want to add a couple of garter stitch rows at the beginning and end of your shawl.

CAST-ON

Cast-on *number of wanted repeats* x 20 + 3 + 2x *number of wanted edge sts* sts.

Example: You want to have 5 repeats and 4 garter sts at each side: cast-on 5 x 20 + 3 + 2 x 4 = 111 sts.

BIND-OFF

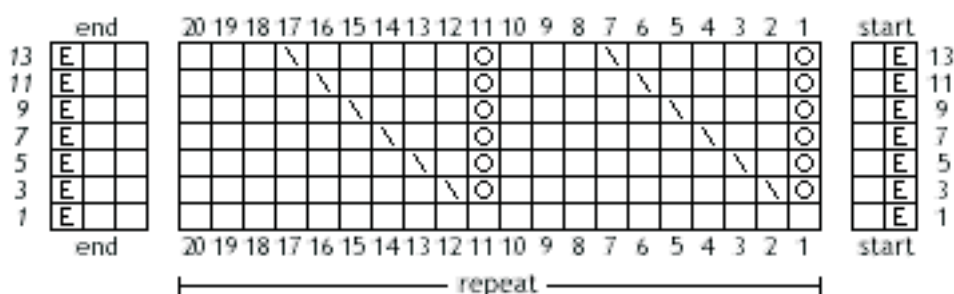
I suggest to use a loose bind-off for your shawl, e.g. Jeny's surprisingly stretchy bind off,
e.g. Jeny's surprisingly stretchy bind off (www.knitty.com/ISSUEfall09/FEATjssbo.php).

All content (text, pictures, etc) of this document is protected by copyright.

Please note: by using this instruction you agree to my terms of use which you can find on page 4.

Advent 2018 - day 1

the pattern shows only the right side rows



Cast-on the desired number of stitches (for cast-on see page 2)

Cast-on the desired number of stitches (for cast-on see page 2)

- row 1: edge st, k,
* 20x k, *
2x k, edge st,
- row 3: edge st, k,
* yo, skpo, 8x k, *
2x k, edge st,
- row 5: edge st, k,
* yo, k, skpo, 7x k, *
2x k, edge st,
- row 7: edge st, k,
* yo, 2x k, skpo, 6x k, *
2x k, edge st,
- row 9: edge st, k,
* yo, 3x k, skpo, 5x k, *
2x k, edge st,
- row 11: edge st, k,
* yo, 4x k, skpo, 4x k, *
2x k, edge st,
- row 13: edge st, k,
* yo, 5x k, skpo, 3x k, *
2x k, edge st,

These are the terms of use for

unikatissima's Lace Knitter's Advent Calendar 2018

The terms of use are valid as well for this file as for the other pattern files which will be published from Dec 1, 2018 to Dec 24, 2018

in English at http://www.unikatissima.de/e/?page_id=13195 and
in German at http://www.unikatissima.de/d/?page_id=16826 .

Terms of use

All content (text, pictures, etc) of this document is **protected by copyright**.

This document/file is **for your personal use only**.

You may

- create items from this instruction,
- adapt/vary the pattern and
- sell the finished items,
- print a copy of this file **for your personal use only** and
- set a link to my ravelry pages (www.ravelry.com/designers/susann-hajjar) or my blog (www.unikatissima.de/e/) to tell friends of this document;
- **not** change this file without my prior permission;
- **not** share this file:
 - no (re)sale of file or printed copies of this document,
 - no distribution for free or loan, neither digitally nor on paper,
 - no publication in internet (e.g. forums, blogs, etc) or any other medium;
- **not** mass produce items from my instructions/patterns;
- **not** claim the instruction/pattern as your own.

It would be great if you gave credit to unikatissima
- I really would appreciate this! Thank you

If you have any questions about the terms of use please drop me an email:
unikatissima@gmx.de

Share your shawl

I opened the group *unikatissima* at ravelry where you can discuss this pattern and my other patterns, too.

You can register at ravelry with your username and a valid email address only, with all other information about you it's up to you whether you give them (at least it was like this when I registered ;-)).

Links:

www.ravelry.com
www.ravelry.com/groups/unikatissima