

unikatissima's

lace knitter's advent calendar

<http://www.ravelry.com/patterns/library/lace-poinsettia>

lace poinsettia version 'knit-purl'



please note that by using this instruction
you agree to my terms of use
which you find on the second page

lace poinsettia version 'knit-purl'

note

this file only contains all charts, if you want written instructions please download the daily files (http://www.unikatissima.de/e/?page_id=6708)

content

note, content & terms of use	p. 2
general information & symbols / abbreviations	p. 3
charts	
days 1 - 6	p. 4
days 7 - 12	p. 5
days 13 - 18	p. 6
days 18 - 24	p. 7

terms of use

all content (text, pictures, etc) of this document is **protected by copyright**. this document/file is **for your personal use only**.

you may

- create items from this instruction,
- adapt/vary the pattern and
- sell the finished items,
- print a copy of this file **for your personal use only** and
- set a link to my blog (www.unikatissima.com/shop/) or my ravelry pages (www.ravelry.com/designers/susann-hajjar) to tell friends of this document;
- **not** share this file:
 - no (re)sale of file or printed copies of this document,
 - no distribution for free or loan, nor digitally nor on paper,
 - no publication in internet (e.g. forums, blogs, etc) or any other medium;
- **not** mass produce items from my instructions/patterns;
- **not** claim the instruction/pattern as your own.

it would be great if you gave credit to unikatissima
- I really would appreciate this! thank you.

if you have any questions about the terms of use please drop me an email:
[unikatissima\(at\)gmx.de](mailto:unikatissima(at)gmx.de)

lace poinsettia version 'knit-purl'

general information

the pattern is 51 stitches wide and 482 rows long and does **not** include edge stitches!
⇒ cast-on 51 sts + number of edge sts

the pattern only shows the right side rows

the pattern is 'complete', i.e. not meant to be repeated in height or width

the pattern is made symmetrical, so if you think that the table runner / scarf is too wide, leave out the same number of stitches at the begin and end of every row and too long, leave out the same number of rows at the begin and end

the following items would e.g. look beautiful:

- ⇒ from day 2 row 5 to day 23 row 18 = 434 rows
- ⇒ from day 3 row 9 to day 22 row 14 = 386 rows
- ⇒ from day 6 row 13 to day 19 row 9 = 258 rows

symbols / abbreviations

RS - right side, WS - wrong side

other abbreviations see below

<input type="checkbox"/> k - knit	RS: k WS: p
<input type="checkbox"/> yo - yarn over	RS: yo WS: p
<input type="checkbox"/> k2tog - knit 2 together or other right decrease	RS: k2tog WS: p
<input type="checkbox"/> ssk - slip 1, slip 1, knit both together or other left decrease	RS: ssk WS: p
<input type="checkbox"/> sl-k2tog-ssso - slip 1, knit 2 together, pass slipped stitch over	RS: sl-k2tog-ssso WS: p
<input type="checkbox"/> p - purl	RS: p WS: k

All content (text, pictures, etc) of this document is protected by copyright

Please note: by using this instruction you agree to my terms of use which you can find on page 2

lace poinsettia version 'knit-purl'

<http://www.ravelry.com/patterns/library/lace-poinsettia>

days 1 - 6

6

5

4

3

2

1

important:
 you can find *more information* (e.g. cast-on and edge stitches) and
 a description of the *symbols and abbreviations* on page 3

All content (text, pictures, etc) of this document is protected by copyright
 Please note: by using this instruction you agree to my terms of use which you can find on page 2

lace poinsettia version 'knit-purl'

<http://www.ravelry.com/patterns/library/lace-poinsettia>

days 7 - 12

12

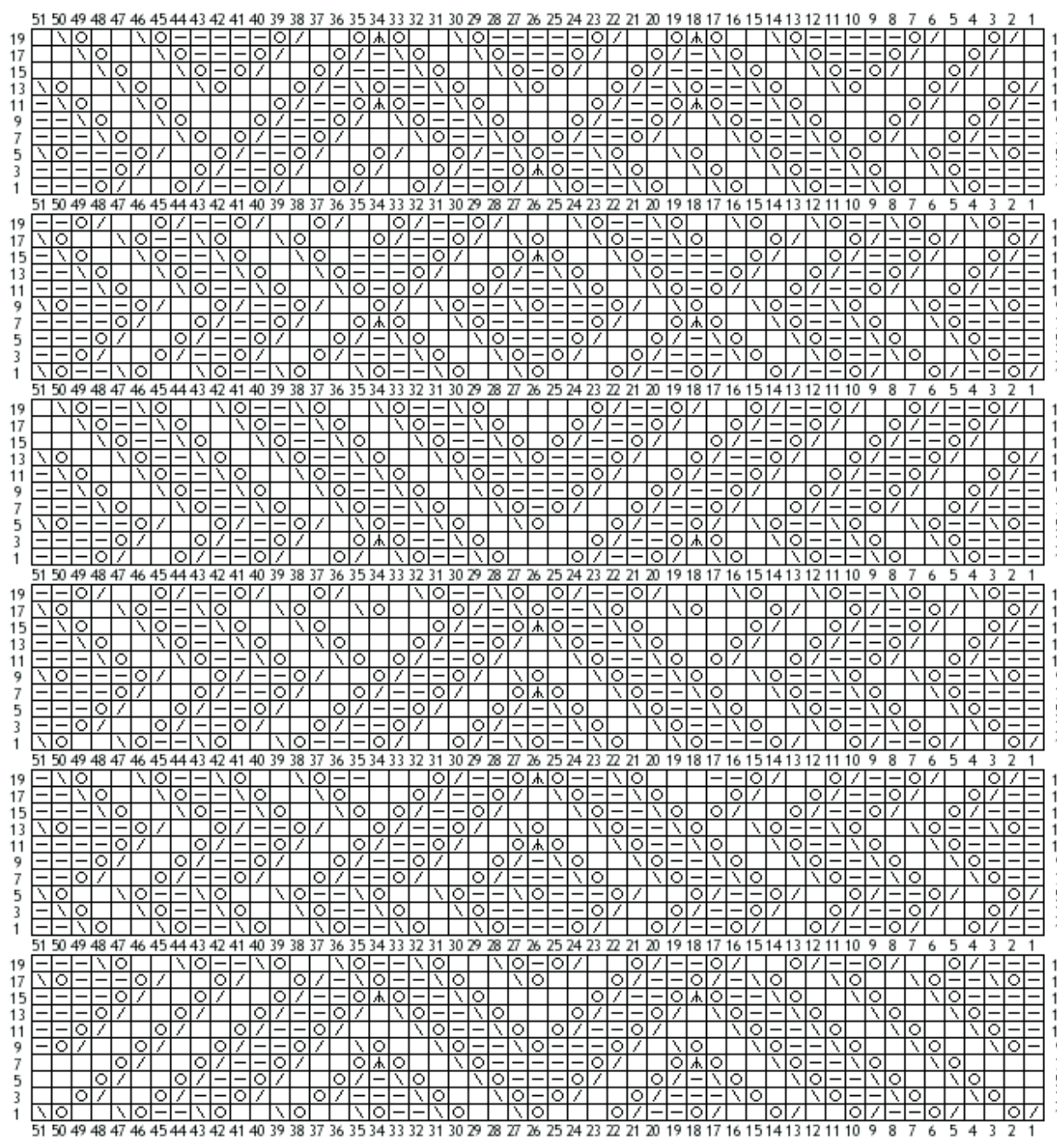
11

10

9

8

7



important:

you can find *more information* (e.g. cast-on and edge stitches) and a description of the *symbols and abbreviations* on page 3

All content (text, pictures, etc) of this document is protected by copyright
Please note: by using this instruction you agree to my terms of use which you can find on page 2

lace poinsettia version 'knit-purl'

http://www.ravelry.com/patterns/library/lace-poinsettia

days 13 - 18

18

17

16

15

14

13

Knitting chart for days 13-18 of the 'knit-purl' lace poinsettia pattern. The chart is organized into six horizontal sections, one for each day. Each section contains a grid with columns numbered 1 to 51 and rows numbered 1 to 19. Symbols include \ (knit), / (purl), and \O (lace symbol). A central diamond shape is formed by lace symbols across the rows.

important:

you can find *more information* (e.g. cast-on and edge stitches) and a description of the *symbols and abbreviations* on page 3

